

D-1 Agarose is available in 5 types:  
Low EEO, Medium EEO, High EEO, Special High EEO  
and Quick Soluble, for different uses.

## APPLICATIONS

### D-1 LE: with Low EEO. High electrophoresis mobility

- Nucleic acid analytical and preparative electrophoresis.
- Blotting.
- Protein electrophoresis such as radial immunodiffusion.

### D-1 ME: with intermediate EEO

- Nucleic acids electrophoresis.
- Protein electrophoresis (serum protein and immunoelectrophoresis).

### D-1 HE: with high EEO

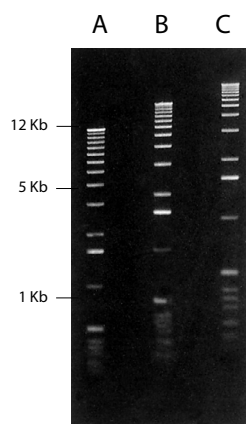
- Used in techniques such as serum protein, immunoelectrophoresis and counterimmunoelectrophoresis.

### D-1 SHE: with very high EEO

- For techniques that require high EEO.
- To blend with lower EEO agarose in order to prepare agarose with desired EEO value.

### D-1 QS (Quick Soluble):

- This type of agarose is based on the same superior performance, parameters, applications and functional tests as those of agarose.
- An additional characteristic of this particular type of agarose is the special particle size distribution, providing an easier and faster dissolution step.



D1-LE Agarose gels in IX TAE buffer A-0.75%, B-1%, C-1.25%

Marker: 1Kb ladder.

Electrophoresis conditions: submarine gel, 2 hours 30 min, 4.5 V/cm in 1X TAE buffer.

## FEATURES

- ✓ Extraordinary mechanical resistance for more reliable and easier handling.
- ✓ Possibility of varying pore size in accordance with particle size by modifying the gel concentration.
- ✓ Easy preparation of the gel by simple dilution in aqueous buffers either by standard boiling or microwaving.
- ✓ Greater thermal stability due to high hysteresis (difference between gelling and melting temperatures).
- ✓ Excellent transparency of the gel and high visibility.
- ✓ Exceptionally low absorption of staining agents.
- ✓ Absence of toxicity (polyacrylamide is neurotoxic).

## SPECIFICATIONS & FUNCTIONAL TESTS

\* EEO (electroendosmosis)

	D-1 LE/QS	D-1 ME	D-1 HE	D-1 SHE
Moisture	≤ 10%	≤ 10%	≤ 10%	≤ 10%
Ash	≤ 0.4%	≤ 0.5%	≤ 1.0%	≤ 1.5%
EEO*	0.05-0.13	0.16-0.19	0.23-0.26	≥ 0.3
Sulfate	≤ 0.1%	≤ 0.14%	≤ 0.2%	≤ 0.2%
Clarity 1.5 % (NTU)	≤ 3	≤ 4	≤ 4	≤ 4
Gel Strength 1% (g/cm <sup>2</sup> )	≥ 1200	≥ 1000	≥ 750	≥ 700
Gel Strength 1.5 % (g/cm <sup>2</sup> )	≥ 2500	≥ 2200	≥ 1200	≥ 1100
Gelling Temperature 1.5 % (°C)	36 ± 1.5	36 ± 1.5	36 ± 1.5	36 ± 1.5
Melting Temperature 1.5 % (°C)	88 ± 1.5	88 ± 1.5	88 ± 1.5	88 ± 1.5
DNase/ RNase activity	None detected	-	-	-
DNA resolution ≥ 1000 bp	Finely resolved	-	-	-
Gel background	Very low	-	-	-